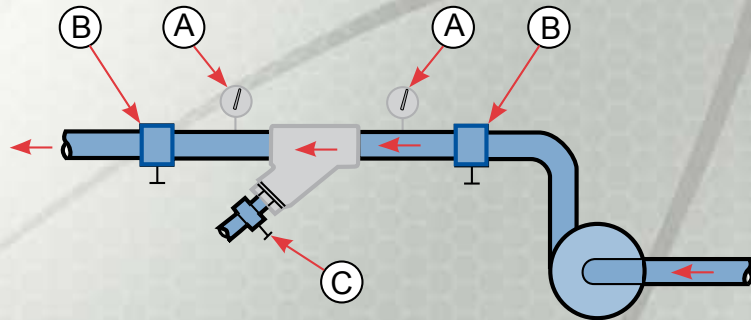


Y STRAINERS

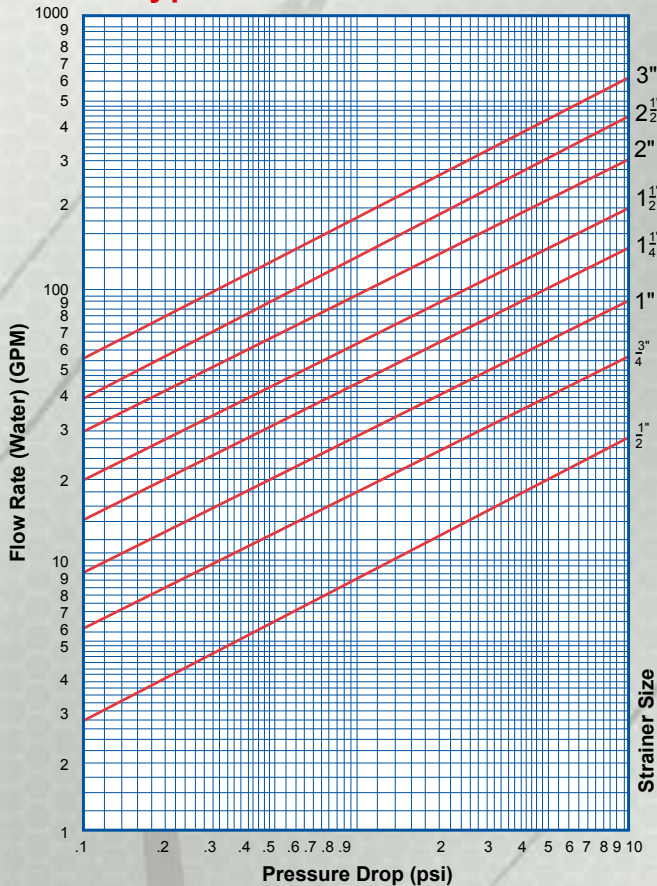
“Y” Strainers take their name from their configuration. They are most commonly used in pressurized lines, gas or liquid, but can also be used in suction or vacuum conditions. They are intended for applications where small amounts of solid particulate are expected, and where clean-out will be infrequent. If solids will flush easily from the screen, and fluid can be exhausted to atmosphere, a blow-down valve on the drain port will allow clean-out without removal of the screen, and without interrupting the process flow.

- A. Pressure gauges to indicate clogged screen
- B. Isolation valves for servicing strainer
- C. Optional manual or auto blow-down

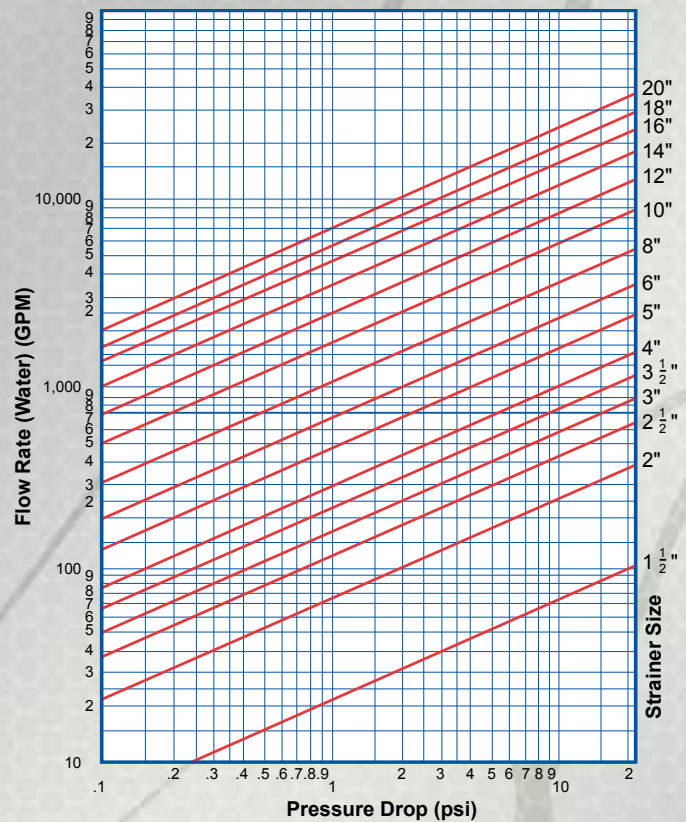


Flow Rate Vs. Pressure Drop (Clean Screen)

Y Type Strainers - Threaded



Y Type Strainers - Flanged



Note: These charts are for theoretical calculations **ONLY**.

Please contact our office with your exact specifications and you will be provided with factory calculations.

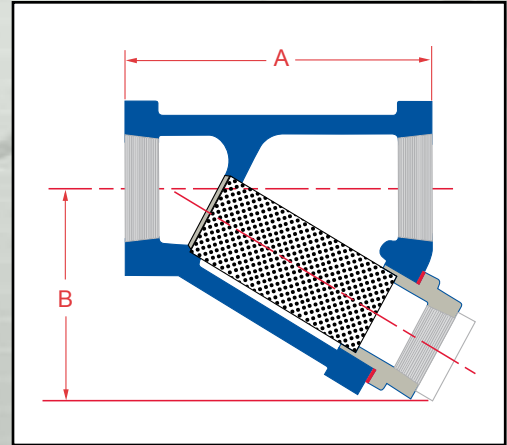
CAST Y STRAINERS

T250 - Cast Iron

NPT End Connections



Sure Flow threaded strainers in Cast Iron feature a machined seat which ensures a perfect fit for the removable, stainless steel screen. All sizes come complete with NPT blow-off with plug, which can be replaced with a ball valve for on-line blow-down of particulate.



Notes:

- Must specify if for steam service
- Manufacturer reserves the right to modify dimensions, materials, or design. Consult factory for certification.

Construction

Cast Iron - Body, Cover and Plug
 - High Tensile ASTM A126 Class B
 All screens are Stainless Steel

Dimensions (Inches)					
Size		A	B	Blow-Off NPT	Shipping Weight (LBS)
Inches	Prefix				
1/2	0050	3 3/16	2 1/16	3/8	5
3/4	0075	3 3/4	2 7/16	1/2	6
1	0100	4	2 5/8	1/2	8
1 1/4	0125	5	3 3/8	3/4	13
1 1/2	0150	5 3/4	3 7/8	3/4	15
2	0200	7	4 3/4	1	24
2 1/2	0250	9 1/4	5 7/8	1 1/2	37
3	0300	10	6	1 1/2	48

Ordering Information

Example: Include full description

Size Model Screen
 (Prefix) Number Opening
0200 T250 032

2" Threaded Y Strainer, Cast Iron, ASME Class 250, 20 Mesh Screen

Operating Pressures and Temperatures

Type	Size	psi @ Temp Steam*	psi @ Temp WOG
T250	1/2" - 3"	250 @ 400 °F	400 @ 150 °F

Standard Screens

Size	Standard	Opening
1/2" - 2"	20 mesh	0.032"
2 1/2" - 3"	3/64" perf	0.045"



Sure flow
 Equipment Inc.

Toll Free: 1-800-263-8251 Toll Free Fax: 1-800-876-1164
 International: 1-905-335-1350 International Fax: 1-905-332-4993
 Email: info@sureflowequipment.com www.sureflowequipment.com



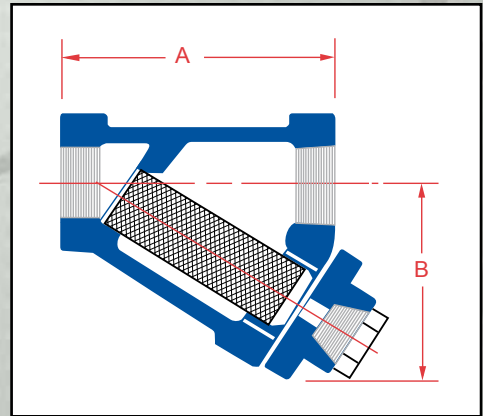
CAST Y STRAINERS

TB150 / TB300 - Bronze

NPT and Sweat End Connections



Sure Flow threaded strainers in Cast Bronze feature a machined, tapered seat which ensures a perfect fit for the removable, stainless steel screen. All sizes come complete with NPT blow-off with plug, which can be replaced with a ball valve for on-line blow-down of particulate.



Notes:

- Must specify if for steam service
- For Socket Weld add suffix "SW" to model number

Manufacturer reserves the right to modify dimensions, materials, or design. Consult factory for certification.

Construction

Cast Bronze - Body, Cover and Plug

- ASTM B62

All screens are Stainless Steel

Dimensions (Inches)

Size		A			B			Blow-Off NPT			Shipping Weight (LBS)	
Inches	Prefix	150	150SW	300	150	150SW	300	150	150SW	300	150	300
1/4	0025	3 3/16	3 3/8	--	2 3/16	2 3/8	--	3/8	3/8	--	2	--
3/8	0038	3 3/16	3 3/8	--	2 3/16	2 3/8	--	3/8	3/8	--	2	--
1/2	0050	3 3/16	3 3/8	3	2 3/16	2 3/8	2 5/16	3/8	3/8	3/8	2 1/2	2 1/2
3/4	0075	3 15/16	4 5/16	3 7/16	2 3/4	2 3/4	2 1/2	3/8	3/8	3/8	3	3
1	0100	4 9/16	5	4 1/16	2 15/16	3 3/16	3 1/8	1/2	1/2	3/4	5	6
1 1/4	0125	5 5/16	5 15/16	4 7/8	3 9/16	3 11/16	3 5/8	1/2	1/2	3/4	9	9
1 1/2	0150	6 3/16	6 15/16	5 3/4	3 13/16	4 1/8	4 1/8	1/2	1/2	3/4	10	11
2	0200	7 1/2	8 11/16	6 3/4	5 7/16	5 3/16	5	1/2	1/2	3/4	16	19
2 1/2	0250	9 1/16	--	7 1/2	5 15/16	--	5 1/4	1/2	--	1 1/4	29	29
3	0300	10 3/16	--	8 1/2	6 5/16	--	6 1/2	1/2	--	1 1/4	38	42

Ordering Information

Example: Include full description

Size	Model	Screen
(Prefix)	Number	Opening
0150	TB150	032

1 1/2" NPT, Y Strainer, Bronze, ASME Class 150, 20 Mesh Screen

Operating Pressures and Temperatures

Type	Size	psi @ Temp Steam*	psi @ Temp WOG
TB150	1/4" - 3"	150 @ 358 °F	300 @ 150 °F
TB300	1/2" - 3"	300 @ 417 °F	400 @ 150 °F

Standard Screens

Size	Standard	Opening
1/4" - 2"	20 mesh	0.032"
2 1/2" - 3"	3/64" perf	0.045"



Sure Flow
Equipment Inc.

Toll Free: 1-800-263-8251 Toll Free Fax: 1-800-876-1164
International: 1-905-335-1350 International Fax: 1-905-332-4993
Email: info@sureflowequipment.com www.sureflowequipment.com



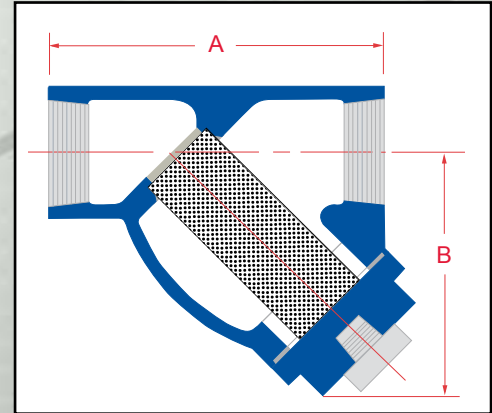
CAST Y STRAINERS

YT6 / YT6SS - Cast Steel / Cast 316 Stainless Steel

NPT or Socket Weld Connections



Threaded or Socket Weld strainers in Cast Steel and Cast Stainless Steel are rated for up to 1480 psi for Water, Oil or Gas. A machined, tapered seat ensures a perfect fit for the removable, stainless steel screen. All sizes come complete



with blow-off and plug, which can be replaced with a ball valve for on-line blow-down of particulate.

Notes:

- Must specify if for steam service
- For Socket Weld add suffix "SW" to model number

Manufacturer reserves the right to modify dimensions, materials, or design. Consult factory for certification.

Construction

- Cast Steel** - Body, Cover and Plug
 - ASTM A216 Grade WCB
- Stainless Steel** - Body, Cover and Plug
 - ASTM A351 Grade CF8M
- All screens are Stainless Steel

Dimensions (Inches)					
Size		A	B	Blow-Off NPT	Shipping Weight (LBS)
Inches	Prefix				
1/2	0050	3 1/4	2 3/16	1/4	4
3/4	0075	3 5/8	2 3/4	1/4	5
1	0100	4 1/4	3 3/16	1/2	6
1 1/4	0125	5 1/4	3 7/8	1/2	8
1 1/2	0150	6 1/4	4 3/4	1/2	10
2	0200	7 5/8	6	3/4	18
2 1/2	0250	8 3/8	7	1 1/4	25
3	0300	9 1/2	8 1/2	1 1/4	30

Ordering Information

Example: Include full description

Size (Prefix)	Model Number	Screen Opening
0150	YT6SS	032

1 1/2" NPT, Y Strainer, 316 SS, ASME Class 600, 1/32" Perf Screen

Operating Pressures and Temperatures

Type	Size	psi @ Temp Steam*	psi @ Temp WOG
YT6	1/2" - 3"	600 @ 486 °F	1480 @ 100 °F
YT6SS	1/2" - 3"	600 @ 486 °F	1440 @ 100 °F

Standard Screens

Size	Standard	Opening
1/2" - 1"	1/32" perf	0.032"
1 1/4" - 2"	1/32" perf	0.032"
2 1/2" - 3"	3/64" perf	0.045"



Sure flow
Equipment Inc.

Toll Free: 1-800-263-8251 Toll Free Fax: 1-800-876-1164
 International: 1-905-335-1350 International Fax: 1-905-332-4993
 Email: info@sureflowequipment.com www.sureflowequipment.com



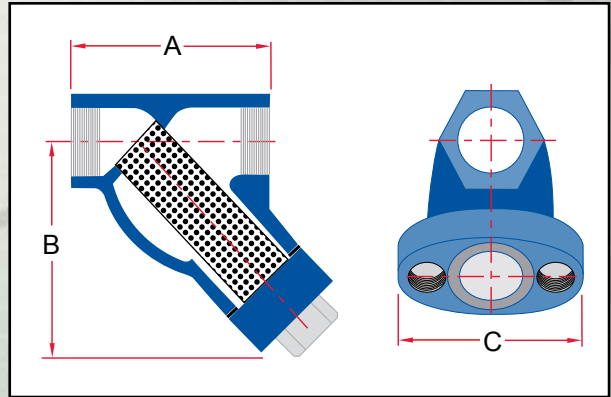
CAST Y STRAINERS

YTC1500CM / YTC1500SS - Cast Chrome-Moly / Cast 316 Stainless Steel

NPT or Socket Weld Connections



Sure Flow Class 1500 ASME Strainers are available in Stainless Steel and Chrome-Moly WC6. A bolted cover allows for quick, easy screen removal and a machined, tapered seat ensures a



perfect fit for the removable stainless steel screen. This Strainer may be installed in vertical or horizontal pipelines with the blow-off connection at the lower end of the screen.

Blow-off drain to be in NPT or Socket Weld. Please specify.

Notes:

- Must specify if for steam service
- Manufacturer reserves the right to modify dimensions, materials, or design. Consult factory for certification.

Construction

Chrome-Moly - Body, Cover - ASTM A217 Grade WC6
Stainless Steel - Body, Cover - ASTM A351 Grade CF8M
 All screens are Stainless Steel

Dimensions (Inches)					
Size		A	B	C	Shipping Weight (LBS)
Inches	Prefix				
1/2	0050	3 5/8	3 7/8	4	16
3/4	0075	4 1/4	4 9/16	4 7/8	19
1	0100	4 7/8	5 5/16	5 5/8	23
1 1/2	0150	6 3/8	6 5/8	7 9/16	38
2	0200	8 5/8	8 1/2	9 1/8	68
2 1/2	0250	9	8 3/4	9 1/4	95
3	0300	9 3/4	10 1/16	9 9/16	114

Operating Pressures and Temperatures			
Type	Size	psi @ Temp Steam*	psi @ Temp WOG
YTC1500CM	1/2" - 3"	1500 @ 596 °F	3750 @ 100 °F
YTC1500SS	1/2" - 3"	1500 @ 596 °F	3600 @ 100 °F

Ordering Information

Example: Include full description

Size Model Screen
 (Prefix) Number Opening
0200 YTC1500CM 032

2" NPT, Y Strainer, Cast Chrome-Moly, ASME Class 1500, 1/32" Perf Screen

Standard Screens		
Size	Standard	Opening
1/2" - 2"	1/32" perf	0.032"
2 1/2" - 3"	3/64" perf	0.045"



**Sure flow
Equipment Inc.**

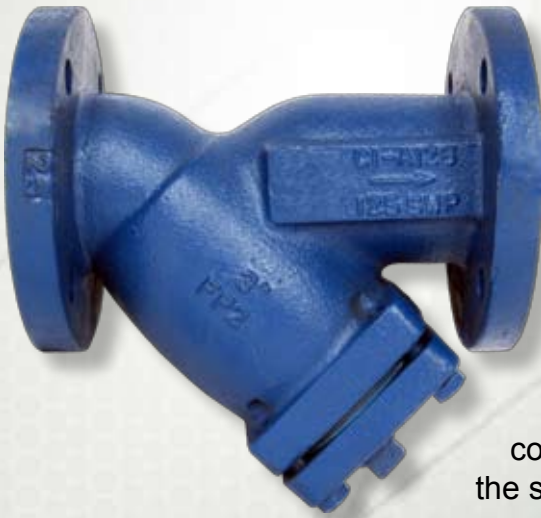
Toll Free: 1-800-263-8251 Toll Free Fax: 1-800-876-1164
 International: 1-905-335-1350 International Fax: 1-905-332-4993
 Email: info@sureflowequipment.com www.sureflowequipment.com



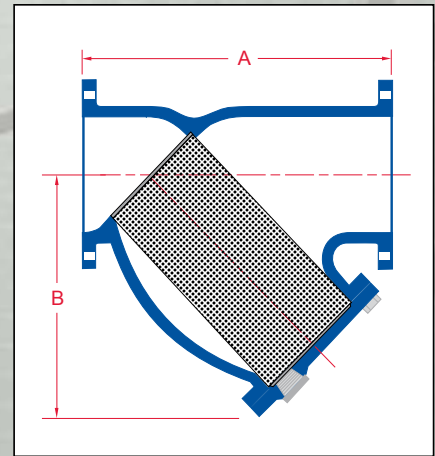
CAST Y STRAINERS

YF125 - Cast Iron

Class 125 Flanged End Connections



Sure Flow Cast Iron Flanged Strainers feature a machined seat which ensures a perfect fit for the removable, stainless steel screen. All sizes come complete with flanged blow-off cover, gasket & plug. May be installed in vertical or horizontal pipelines with blow-off connection at the lower end of the screen.



Notes:

- Must specify if for steam service

Manufacturer reserves the right to modify dimensions, materials, or design. Consult factory for certification.

Construction

Cast Iron - Body, Cover and Plug

- High Tensile ASTM A126 Class B

All screens are Stainless Steel

Dimensions (Inches)					
Size		A	B	Blow-Off NPT	Shipping Weight (LBS)
Inches	Prefix				
2	0200	7 7/8	5 1/4	1/2	21
2 1/2	0250	10	6 1/2	1	32
3	0300	10 1/8	7	1	39
4	0400	12 1/8	8 1/4	1 1/2	69
5	0500	15 5/8	11 1/4	2	110
6	0600	18 1/2	13 1/2	2	153
8	0800	21 5/8	15 1/2	2	284
10	1000	25 3/4	18 1/2	2	426
12	1200	29 7/8	21 3/4	2	667
14	1400	33 1/4	25	2	903
16	1600	38 3/8	26 1/2	2	1254
18	1800	43 1/8	31	2	1642
20	2000	49 1/2	36 1/4	2	2615

Ordering Information

Example: Include full description

Size	Model	Screen
(Prefix)	Number	Opening
0400	YF125	125

4" Flanged, Y Strainer, Cast Iron, Class 125
ASME Flanges, 1/8" Perf Screen

Operating Pressures and Temperatures

Type	Size	psi @ Temp Steam*	psi @ Temp WOG
YF125	2" - 12"	125 @ 344 °F	200 @ 150 °F
YF125	14" - 20"	125 @ 344 °F	150 @ 150 °F

Standard Screens

Size	Standard	Opening
2" - 3"	3/64" perf	0.045"
4" - 20"	1/8" perf	0.125"



Sure Flow
Equipment Inc.

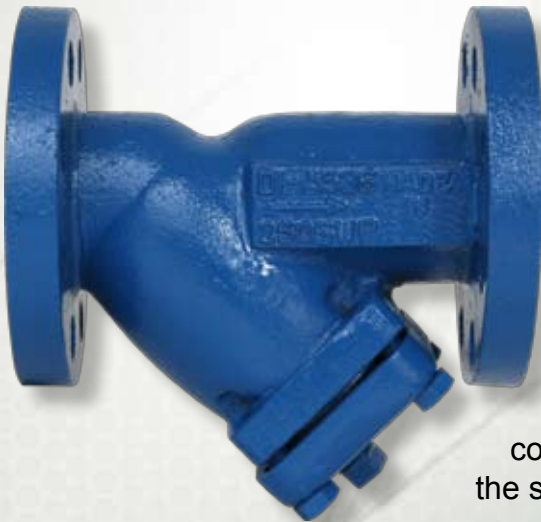
Toll Free: 1-800-263-8251 Toll Free Fax: 1-800-876-1164
International: 1-905-335-1350 International Fax: 1-905-332-4993
Email: info@sureflowequipment.com www.sureflowequipment.com



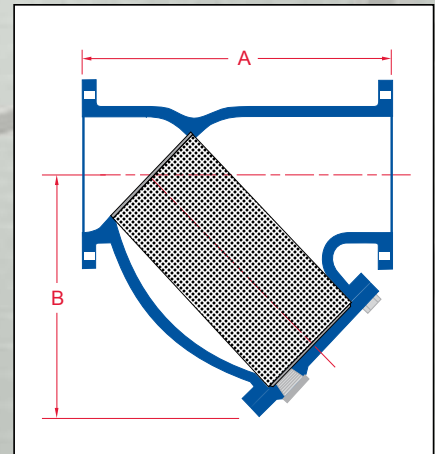
CAST Y STRAINERS

YF250 - Ductile Iron

Class 250 Flanged End Connections



Sure Flow Ductile Iron Flanged Strainers feature a machined seat which ensures a perfect fit for the removable, stainless steel screen. All sizes come complete with flanged blow-off cover, gasket & plug. May be installed in vertical or horizontal pipelines with blow-off connection at the lower end of the screen.



Notes:

- Must specify if for steam service

Manufacturer reserves the right to modify dimensions, materials, or design. Consult factory for certification.

Construction

Ductile Iron - Body, Cover and Plug
 - ASTM A536 Class 65-45-12
 All screens are Stainless Steel

Dimensions (Inches)					
Size		A	B	Blow-Off NPT	Shipping Weight (LBS)
Inches	Prefix				
2	0200	8 5/8	5 1/4	1/2	34
2 1/2	0250	10 5/8	6 1/2	1	54
3	0300	12	7	1	72
4	0400	14 1/2	8 1/4	1 1/2	114
5	0500	16 3/8	11 1/4	2	174
6	0600	19 5/16	13 1/2	2	204
8	0800	23 3/8	15 1/2	2	432
10	1000	27 3/8	18 1/2	2	660
12	1200	32	21 3/4	2	978

Ordering Information

Example: Include full description

Size Model Screen
 (Prefix) Number Opening
0800 **YF250** **125**

8" Flanged, Y Strainer, Ductile Iron, Class 250
 ASME Flanges, 1/8" Perf Screen

Operating Pressures and Temperatures

Type	Size	psi @ Temp Steam*	psi @ Temp WOG
YF250	2" - 12"	250 @ 400 °F	500 @ 150 °F

Standard Screens

Size	Standard	Opening
2" - 3"	3/64" perf	0.045"
4" - 12"	1/8" perf	0.125"



**Sure Flow
 Equipment Inc.**

Toll Free: 1-800-263-8251 Toll Free Fax: 1-800-876-1164
 International: 1-905-335-1350 International Fax: 1-905-332-4993
 Email: info@sureflowequipment.com www.sureflowequipment.com



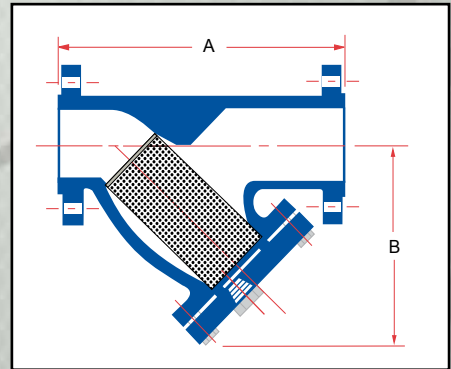
CAST Y STRAINERS

YF150 / YF150SS - Cast Steel / Cast 316 Stainless Steel

Class 150 Flanged End Connections



Sure Flow Class 150 ASME Flanged strainers are available in Carbon Steel and Stainless Steel. A machined, tapered seat ensures a perfect fit for the removable, stainless steel screen. Size 2" and larger come complete with flanged blow-off cover, gasket & plug. 1 1/2" and smaller come complete with solid threaded cover and gasket. May be installed in vertical or horizontal pipelines with blow-off connection at the lower end of the screen.



Notes:

- Must specify if for steam service
- Sizes 14" and larger are available in Cast Steel only.

Manufacturer reserves the right to modify dimensions, materials, or design. Consult factory for certification.

Construction

Carbon Steel - Body, Cover - ASTM A216 Grade WCB

Stainless Steel - Body, Cover - ASTM A351 Grade CF8M

All screens are Stainless Steel

Size		Dimensions (Inches)			
Inches	Prefix	A	B	Blow-Off NPT	Shipping Weight (LBS)
1/2	0050	6	2 9/16	1/4	9
3/4	0075	7 1/2	3	1/4	11
1	0100	7 3/8	3 3/8	1/4	15
1 1/2	0150	7 1/4	4 3/4	1/2	18
2	0200	8 5/8	4 7/8	1/2	30
2 1/2	0250	10 1/4	7 1/2	3/4	44
3	0300	11 5/8	7 3/4	1	60
4	0400	14 1/4	9 1/8	1 1/2	96
5	0500	17 5/8	11	2	150
6	0600	18 5/8	13 3/8	2	174
8	0800	24 3/8	14 5/8	2	264
10	1000	26	17 1/4	2	414
12	1200	30 3/8	21	2	615
14	1400	36	27 3/16	2	720
16	1600	46 9/16	30 1/4	2	956
18	1800	46	35 11/16	2	1130
20	2000	49 1/2	40	2	1500
24	2400	58 3/8	44 1/2	2	1990

Ordering Information

Example: Include full description

Size Model Screen
(Prefix) Number Opening
0400 YF150SS 125

4" Flanged, Y Strainer, Cast Stainless Steel, Class 150
ASME Flanges, 1/8" Perf Screen

Operating Pressures and Temperatures

Type	Size	psi @ Temp Steam*	psi @ Temp WOG
YF150	1/2" - 24"	150 @ 358 °F	285 @ 100 °F
YF150SS	1/2" - 12"	150 @ 358 °F	275 @ 100 °F

Standard Screens

Size	Standard	Opening
1/2" - 1 1/2"	1/32" perf	0.032"
2" - 3"	3/64" perf	0.045"
4" - 24"	1/8" perf	0.125"



**Sure Flow
Equipment Inc.**

Toll Free: 1-800-263-8251 Toll Free Fax: 1-800-876-1164
International: 1-905-335-1350 International Fax: 1-905-332-4993
Email: info@sureflowequipment.com www.sureflowequipment.com



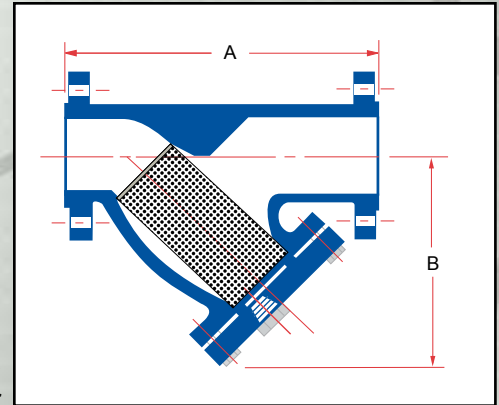
CAST Y STRAINERS

YF300 / YF300SS - Cast Steel / Cast 316 Stainless Steel

Class 300 Flanged End Connections



Sure Flow Class 300 ASME Flanged strainers are available in Carbon Steel and Stainless Steel. A machined, tapered seat ensures a perfect fit for the removable, stainless steel screen. All sizes come complete with flanged blow-off cover, gasket & plug. May be installed in vertical or horizontal pipelines with blow-off connection at the lower end of the screen.



Notes:

- Must specify if for steam service
- Manufacturer reserves the right to modify dimensions, materials, or design. Consult factory for certification.

Construction

Carbon Steel - Body, Cover - ASTM A216 Grade WCB
Stainless Steel - Body, Cover - ASTM A351 Grade CF8M
 All screens are Stainless Steel

Size		Dimensions (Inches)			
Inches	Prefix	A	B	Blow-Off NPT	Shipping Weight (LBS)
1	0100	7 7/8	4 1/8	1/4	23
1	0100H	7 7/8	4 1/8	1/4	24
1 1/2	0150	7 9/16	4 3/8	1/2	27
2	0200	9 3/4	6 1/8	1/2	47
2	0200H	9 3/4	6 1/2	1/2	50
2 1/2	0250	10 11/16	7 7/16	1	64
3	0300	12 9/16	9	1 1/4	87
3	0300H	13 1/2	9 1/16	1 1/4	94
4	0400	14 5/8	11	1 1/2	165
4	0400H	16 5/8	11 3/16	1 1/2	170
5	0500	18 1/2	15 3/8	2	186
6	0600	19 3/4	15 1/2	2	260
8	0800	25	16 1/4	2	385
10	1000	29 1/8	19 1/4	2	610
12	1200	33 3/4	24	2	1300

Ordering Information

Example: Include full description

Size Model Screen
 (Prefix) Number Opening
0400 **YF300SS** **125**

4" Flanged, Y Strainer, Cast Stainless Steel, Class 300
 ASME Flanges, 1/8" Perf Screen

Operating Pressures and Temperatures

Type	Size	psi @ Temp Steam*	psi @ Temp WOG
YF300	1" - 12"	300 @ 417 °F	740 @ 100 °F
YF300SS	1" - 12"	300 @ 417 °F	720 @ 100 °F

Standard Screens

Size	Standard	Opening
1" - 3"	3/64" perf	0.045"
4" - 12"	1/8" perf	0.125"



Sure flow
Equipment Inc.

Toll Free: 1-800-263-8251 Toll Free Fax: 1-800-876-1164
 International: 1-905-335-1350 International Fax: 1-905-332-4993
 Email: info@sureflowequipment.com www.sureflowequipment.com



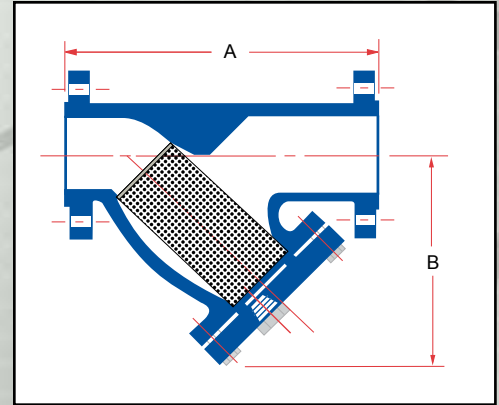
CAST Y STRAINERS

YF600 / YF600SS - Cast Steel / Cast 316 Stainless Steel

Class 600 Flanged or RTJ End Connections



Sure Flow Class 600 ASME Flanged Cast Y Strainers are available in both Carbon Steel and Stainless Steel. They provide economical protection for Water, Oil or Gas service. A machined, tapered seat ensures a perfect fit for the removable, stainless steel screen.



These strainers may be installed in vertical or horizontal pipelines with the blow-off connection at the lower end of the screen.

Notes:

- Must specify if for steam service
- Manufacturer reserves the right to modify dimensions, materials, or design. Consult factory for certification.

Construction

Carbon Steel - Body, Cover - ASTM A216 Grade WCB
Stainless Steel - Body, Cover - ASTM A351 Grade CF8M
 All screens are Stainless Steel

Dimensions (Inches)					
Size		A	B	Blow-Off NPT	Shipping Weight (LBS) 600
Inches	Prefix				
2	0200	11	6 1/8	1/2	53
2 1/2	0250	12	7 1/4	1	79
3	0300	13 1/2	8	1 1/4	100
4	0400	17 15/16	9 3/8	1 1/2	210
5	0500	22 1/4	12 3/8	2	330
6	0600	25 5/8	17 1/4	2	410
8	0800	31 3/4	18 1/2	2	834
10	1000	37 11/16	21 5/8	2	1200
12	1200	42	26 3/4	2	1445

Ordering Information

Example: Include full description

Size Model Screen
 (Prefix) Number Opening
0500 YF600SS 125

5" Flanged, Y Strainer, Cast Stainless Steel, Class 600
 ASME Flanges, 1/8" Perf Screen

Operating Pressures and Temperatures

Type	Size	psi @ Temp Steam*	psi @ Temp WOG
YF600	2" - 12"	600 @ 486 °F	1480 @ 100 °F
YF600SS	2" - 12"	600 @ 486 °F	1440 @ 100 °F

Standard Screens

Size	Standard	Opening
2" - 3"	3/64" perf	0.045"
4" - 12"	1/8" perf	0.125"



**Sure flow
 Equipment Inc.**

Toll Free: 1-800-263-8251 Toll Free Fax: 1-800-876-1164
 International: 1-905-335-1350 International Fax: 1-905-332-4993
 Email: info@sureflowequipment.com www.sureflowequipment.com



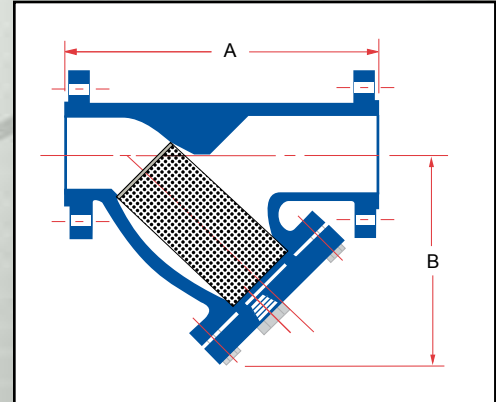
CAST Y STRAINERS

YF900 / YF900SS - Cast Steel / Cast 316 Stainless Steel
YF900LCC - Cast Low Temperature Carbon Steel

Class 900 Flanged or RTJ End Connections



Sure Flow Class 900 ASME Flanged Cast Y Strainers are available in both Carbon Steel and Stainless Steel. They provide economical protection for Water, Oil or Gas service. A machined, tapered seat ensures a perfect fit for the removable, stainless steel screen. These strainers may



be installed in vertical or horizontal pipelines with the blow-off connection at the lower end of the screen.

Notes:

- Must specify if for steam service
- Units are standard with no drain.
- YF1500 is substituted for 2" size

Manufacturer reserves the right to modify dimensions, materials, or design. Consult factory for certification.

Construction

Carbon Steel - Body, Cover - ASTM A216 Grade WCB

Stainless Steel - Body, Cover - ASTM A351 Grade CF8M

Low Temperature Carbon Steel - Body, Cover - ASTM A352 Grade LCC

All screens are Stainless Steel

Dimensions (Inches)

Size		A	B	Blow-Off NPT	Shipping Weight (LBS)
Inches	Prefix				
2	0200	15 1/4	11 11/16	optional	152
3	0300	20 1/4	14 1/2	optional	196
4	0400	23 1/4	18 1/8	optional	360

For YF900 6-inch size and YF900 8-inch size:
 FWT900 6-inch size and FWT900 8-inch size Fabricated Y Strainers are used.

Ordering Information

Example: Include full description

Size	Model	Screen
(Prefix)	Number	Opening
0400	YF900SS	125

*4" Flanged, Y Strainer, Cast Stainless Steel, Class 900
 ASME Flanges, 1/8" Perf Screen*

Operating Pressures and Temperatures

Type	Size	psi @ Temp Steam*	psi @ Temp WOG
YF900	2"	1500 @ 596 °F	3705 @ 100 °F
	3" - 4"	900 @ 532 °F	2220 @ 100 °F
YF900SS	2"	1500 @ 596 °F	3600 @ 100 °F
	3" - 4"	900 @ 532 °F	2160 @ 100 °F
YF900LCC	2"	1500 @ 596 °F	3750 @ 100 °F
	3" - 4"	900 @ 532 °F	2250 @ 100 °F

Standard Screens

Size	Standard	Opening
2" - 3"	3/64" perf	0.045"
4"	1/8" perf	0.125"



**Sure flow
 Equipment Inc.**

Toll Free: 1-800-263-8251 Toll Free Fax: 1-800-876-1164
 International: 1-905-335-1350 International Fax: 1-905-332-4993
 Email: info@sureflowequipment.com www.sureflowequipment.com



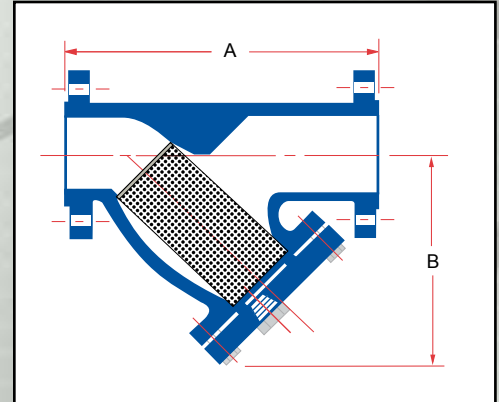
CAST Y STRAINERS

YF1500 / YF1500SS - Cast Steel / Cast 316 Stainless Steel
YF1500LCC - Cast Low Temperature Carbon Steel

Class 1500 Flanged or RTJ End Connections



Sure Flow Class 1500 ASME Flanged Cast Y Strainers are available in both Carbon Steel and Stainless Steel. They provide economical protection for Water, Oil or Gas service. A machined, tapered seat ensures a perfect fit for the removable, stainless steel screen. These strainers may be installed in vertical or horizontal pipelines with the blow-off connection at the lower end of the screen.



Notes:

- Must specify if for steam service
- Units are standard with no drain.

Manufacturer reserves the right to modify dimensions, materials, or design. Consult factory for certification.

Construction

Carbon Steel - Body, Cover - ASTM A216 Grade WCB

Stainless Steel - Body, Cover - ASTM A351 Grade CF8M

Low Temperature Carbon Steel - Body, Cover - ASTM A352 Grade LCC

All screens are Stainless Steel

Dimensions (Inches)					
Size		A	B	Blow-Off NPT	Shipping Weight (LBS)
Inches	Prefix				
2	0200	15 1/4	11 11/16	optional	152
3	0300	20 1/4	14 1/2	optional	290
4	0400	23 1/4	18 1/8	optional	504

For YF1500 6-inch size and YF1500 8-inch size:

FWT1500 6-inch size and FWT1500 8-inch size Fabricated Y Strainers are used.

Ordering Information

Example: Include full description

Size (Prefix) Model Number Screen Opening
0200 **YF1500** **045**

2" Flanged, Y Strainer, Cast Steel, Class 1500
 ASME Flanges, 3/64" Perf Screen

Operating Pressures and Temperatures

Type	Size	psi @ Temp Steam*	psi @ Temp WOG
YF1500	2" - 4"	1500 @ 596 °F	3705 @ 100 °F
YF1500SS	2" - 4"	1500 @ 596 °F	3600 @ 100 °F
YF1500LCC	2" - 4"	1500 @ 596 °F	3750 @ 100 °F

Standard Screens

Size	Standard	Opening
2" - 3"	3/64" perf	0.045"
4"	1/8" perf	0.125"



Sure flow
Equipment Inc.

Toll Free: 1-800-263-8251 Toll Free Fax: 1-800-876-1164
 International: 1-905-335-1350 International Fax: 1-905-332-4993
 Email: info@sureflowequipment.com www.sureflowequipment.com



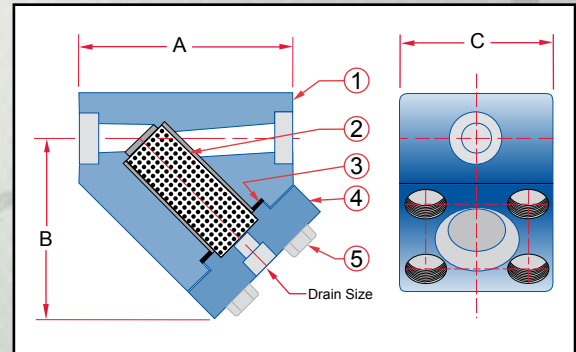
HIGH PRESSURE Y STRAINERS

YBC2500 / YBC2500SS - Carbon Steel / Stainless Steel

Socket Weld or NPT Threaded End Connections



The high strength forged carbon steel or stainless steel construction is designed for higher pressure applications. If all stainless steel construction is needed, add "SS" to the model number. Stainless steel spiral wound gasket is standard.



Notes:

- Higher ASME pressure ratings available
- Larger sizes available
- Unit is Standard with no drain

Manufacturer reserves the right to modify dimensions, materials, or design. Consult factory for certification.

Construction					
Item	1	2	3	4	5
Description	Body	Screen	Gasket	Cover	Bolting

Dimensions (Inches)						
Size		A	B	C	Blow-Off Drain	Shipping Weight (LBS)
Inches	Prefix					
1/2	0050	5 1/2	4 7/8	4 3/8	optional	124
3/4	0075	6	5 1/2	4 3/4	optional	124
1	0100	7 1/4	6 7/8	5 1/8	optional	124
1 1/4	0125	7 3/4	7 11/16	5 1/8	optional	140
1 1/2	0150	8 3/8	7 3/4	6	optional	140
2	0200	9 1/4	9 1/16	6 3/4	optional	140
2 1/2	0250	11	10 1/8	7 3/4	optional	190
3	0300	14 11/16	12 5/16	10 1/2	optional	190

Ordering Information

Example: Include full description

Size Model Screen
(Prefix) Number Opening
0150 YBC2500 045

1 1/2" High Pressure Y Strainer, Carbon Steel,
ASME Class 2500, 3/64" Perf Screen

Operating Pressures and Temperatures

Type	Size	psi @ Temp WOG
YBC2500	1/2" - 3"	6170 @ 100 °F
YBC2500SS	1/2" - 3"	6000 @ 100 °F

Standard Screens

Size	Standard	Opening
1/2" - 3"	3/64" perf	0.045"



Sure flow
Equipment Inc.

Toll Free: 1-800-263-8251 Toll Free Fax: 1-800-876-1164
International: 1-905-335-1350 International Fax: 1-905-332-4993
Email: info@sureflowequipment.com www.sureflowequipment.com

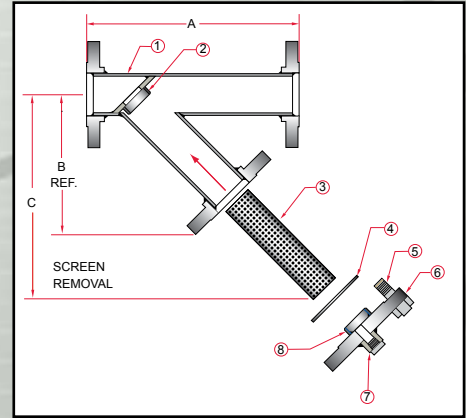


FABRICATED Y STRAINERS

FW150 / FW300 - Carbon Steel
FW150SS / FW300SS - Stainless Steel



Sure Flow Fabricated "Y" Strainers can be designed to your specific application in Carbon Steel or Stainless Steel, along with other materials such as exotic alloys. Pipe sizes 2" to 24" in Class 150 and Class 300 ASME flanges are standard with the capability to supply larger pipe sizes and/or



higher ASME pressure ratings. Screen sizes can be tailored to hold sufficient solids for the required time between clean-outs. Flange sizes can be chosen to fit existing piping, or to achieve the required clean pressure drop. Hinge covers are also available for quick opening. Please contact factory for details.

Notes:

- Higher ASME pressure ratings available
- Larger sizes available

Manufacturer reserves the right to modify dimensions, materials, or design. Consult factory for certification.

		Construction							
Item		1	2	3	4	5	6	7	8
Description		Body Assembly	Screen Guide	Screen	Gasket	Bolting	Blind Flange	Drain Assembly	Screen Guide

Dimensions (Inches)				
Size		A	B	C
Inches	Prefix	150 and 300	150 and 300	150 and 300
2	0200	12	8 1/2	12
2 1/2	0250	13	10	14
3	0300	15	11	16 1/2
4	0400	18	13	18
5	0500	18	14 1/2	21
6	0600	24	16	23
8	0800	30	21	30
10	1000	34	23	33
12	1200	36	24	38
14	1400	36	30 1/2	43
16	1600	41 9/16	32	51
18	1800	46	35	57
20	2000	49 1/2	39	61
24	2400	58 3/8	44	70

Ordering Information

Example: Include full description

Size Model Screen
 (Prefix) Number Opening
1400 FW300 125

14" "Y" Strainer, Carbon Steel, Class 300 ASME Flanges, 1/8" Perf Screen, Bolted Cover

Operating Pressures and Temperatures			
Type	Size	psi @ Temp Steam	psi @ Temp WOG
FW150	2" - 24"	150 @ 366 °F	285 @ 100 °F
FW150SS	2" - 24"	150 @ 366 °F	275 @ 100 °F
FW300	2" - 24"	300 @ 422 °F	740 @ 100 °F
FW300SS	2" - 24"	300 @ 422 °F	720 @ 100 °F



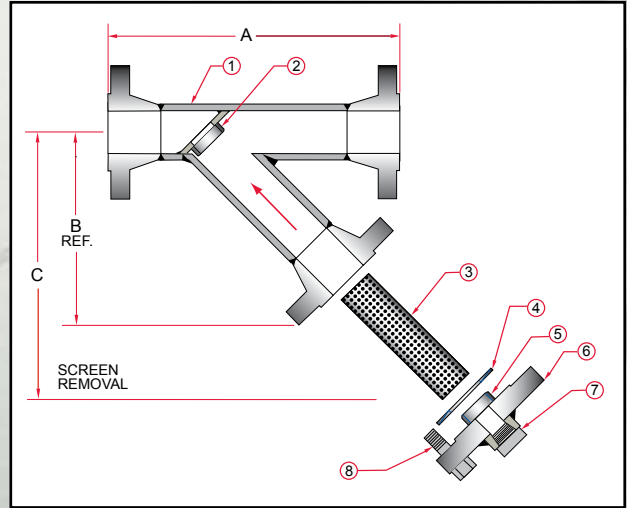
Sure flow
Equipment Inc.

Toll Free: 1-800-263-8251 Toll Free Fax: 1-800-876-1164
 International: 1-905-335-1350 International Fax: 1-905-332-4993
 Email: info@sureflowequipment.com www.sureflowequipment.com



FABRICATED Y STRAINERS

FW600 - Carbon Steel
FW600SS - Stainless Steel



Notes:

- Higher ASME pressure ratings available
- Larger sizes available

Manufacturer reserves the right to modify dimensions, materials, or design. Consult factory for certification.

Construction								
Item	1	2	3	4	5	6	7	8
Description	Body Assembly	Screen Guide	Screen	Gasket	Screen Guide	Blind Flange	Drain Assembly	Bolting

Dimensions (Inches)				
Size		A	B	C
Inches	Prefix			
2	0200	16	14	19
2 1/2	0250	17	15	21
3	0300	19	17	24
4	0400	22	20	28
5	0500	26	24	34
6	0600	28	26	37
8	0800	34	32	45
10	1000	40	34	48
12	1200	44	36	50
14	1400	50	38	53
16	1600	55	41	58
18	1800	60	45	63
20	2000	65	50	70
24	2400	75	55	77

Ordering Information

Example: Include full description

Size Model Screen
 (Prefix) Number Opening
0800 FW600 125

8" Y Strainer, Carbon Steel, Class 600 ASME Flanges, 1/8" Perf Screen.

Operating Pressures and Temperatures			
Type	Size	psi @ Temp Steam	psi @ Temp WOG
FW600	2" - 24"	600 @ 489 °F	1480 @ 100 °F
FW600SS	2" - 24"	600 @ 489 °F	1440 @ 100 °F



Sure flow
 Equipment Inc.

Toll Free: 1-800-263-8251 Toll Free Fax: 1-800-876-1164
 International: 1-905-335-1350 International Fax: 1-905-332-4993
 Email: info@sureflowequipment.com www.sureflowequipment.com



FABRICATED Y STRAINERS

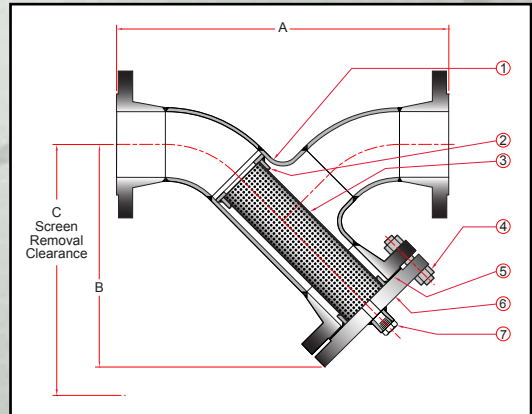
FWT150 / FWT300 - Carbon Steel
FWT150SS / FWT300SS - Stainless Steel

With Standard Butt Welded Fittings



The Sure Flow Fabricated "FWT" Y strainer differs from the "FW" Y strainer by incorporating standard butt welded components into its construction. Fabricated in Carbon or Stainless Steel, pipe sizes 2" through 24" and in Class 150 and Class 300 ASME flanges, the standard strainer is suited for many applications.

Sure Flow also has the capability to



supply larger pipe sizes and/or higher ASME pressure ratings where needed. Screen sizes can be tailored to hold sufficient solids for the required time between clean-outs. Flange sizes can be chosen to fit existing piping, or to achieve the required clean pressure drop. Hinge covers are also available for quick opening. Alternate materials of construction are available. Please contact factory for details.

Notes:

- Higher ASME pressure ratings available
- Larger sizes available

Manufacturer reserves the right to modify dimensions, materials, or design. Consult factory for certification.

		Construction						
Item		1	2	3	4	5	6	7
Description		Body Assembly	Screen Guide	Screen	Bolting	Gasket	Blind Flange	Drain Assembly

Dimensions (Inches)							
Size		A		B		C	
Inches	Prefix	150	300	150	300	150	300
2	0200	13 1/4	13 3/4	9	9 7/16	12	12 1/4
2 1/2	0250	15 11/16	16 1/4	10 5/8	10 15/16	14 1/8	14 1/4
3	0300	17 1/8	17 7/8	11 9/16	12 3/16	15 5/8	16
4	0400	20 3/8	21 1/8	13 5/8	14 1/2	18 1/2	19
5	0500	24 9/16	25 5/16	15 7/8	16 13/16	22 1/2	22 1/2
6	0600	27 3/4	28 1/2	17 3/4	18 15/16	25 1/2	25 1/2
8	0800	35	35 3/4	22	23 1/16	31	31 1/2
10	1000	41 3/8	42 1/2	25 7/8	27 5/16	36 3/4	37 1/8
12	1200	48 3/4	49 15/16	30 5/16	31 13/16	42 7/8	43 3/4
14	1400	55 7/16	56 11/16	33 11/16	35 7/16	47 3/8	48 3/4
16	1600	61 3/16	62 5/8	36 15/16	38 7/8	52 7/8	53 7/8
18	1800	68 1/2	70	40 15/16	43 1/8	59 1/2	60
20	2000	78 1/4	76 5/8	45 1/16	47 3/16	65 1/2	66 1/4
24	2400	87 1/4	88 1/2	51 5/8	54 1/16	73 1/4	75 1/8

Ordering Information

Example: Include full description

Size Model Screen
 (Prefix) Number Opening
0400 **FWT150** **125**

4" Y Strainer, Carbon Steel, Class 150 ASME Flanges, 1/8" Perf Screen.

Operating Pressures and Temperatures			
Type	Size	psi @ Temp Steam	psi @ Temp WOG
FWT150	2" - 24"	150 @ 366 °F	285 @ 100 °F
FWT150SS	2" - 24"	150 @ 366 °F	275 @ 100 °F
FWT300	2" - 24"	300 @ 422 °F	740 @ 100 °F
FWT300SS	2" - 24"	300 @ 422 °F	720 @ 100 °F



Sure flow
Equipment Inc.

Toll Free: 1-800-263-8251 Toll Free Fax: 1-800-876-1164
 International: 1-905-335-1350 International Fax: 1-905-332-4993
 Email: info@sureflowequipment.com www.sureflowequipment.com

